

# Building the people power behind place-based change

Jane Anderson  
Director, Enable





# [ Acknowledgment of Country ]

PLACE Australia acknowledges Traditional Owners of Country throughout Australia and recognises their continuing connection to lands, waters, skies and communities. We pay our deepest respects to Elders past and present, and extend that respect to all Aboriginal and Torres Strait Islander peoples.

We acknowledge the Kurna people, the Traditional Custodians of these lands, waters and skies where we meet today.

# Community Voices



# Who We Are

Partnerships for Local Action and Community Empowerment (PLACE) is a national organisation that champions and supports community-led approaches to social and economic challenges.

We are a support system – a hub for shared learning, partnership and policy innovation. Our work is underpinned by a belief that communities know best what matters to them, and that long-term change starts with shared decision making and strong local leadership.

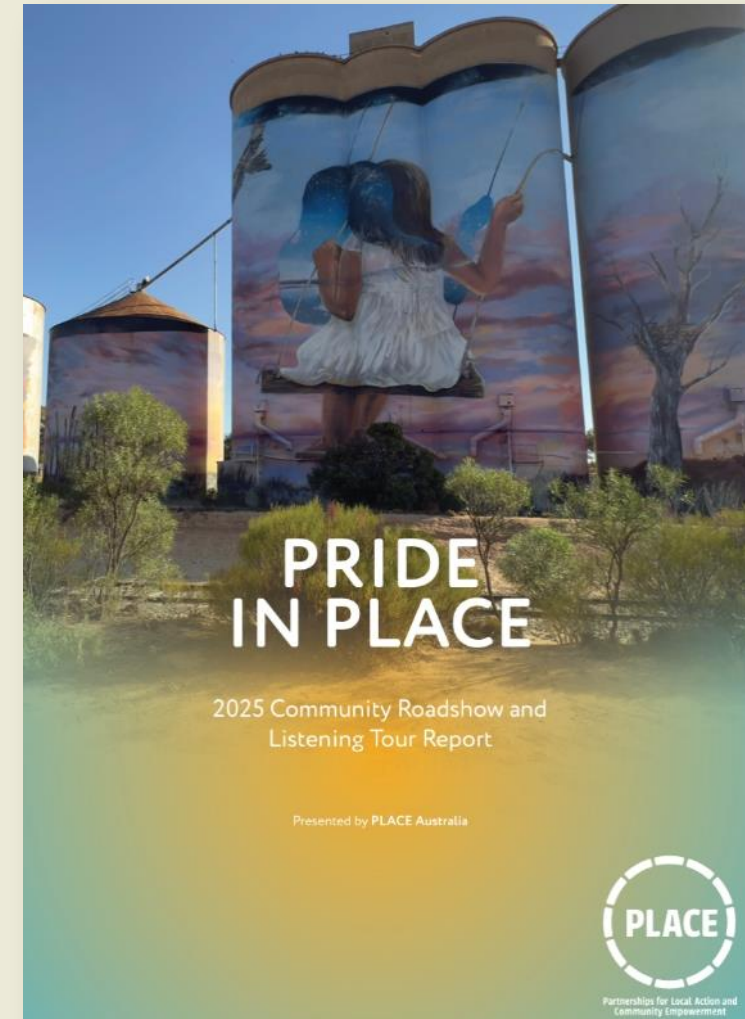




# 2025 Listening Tour

The PLACE Community Roadshow and Listening Tour was a 10-week community engagement initiative from 25 March 2025 to 14 June 2025.

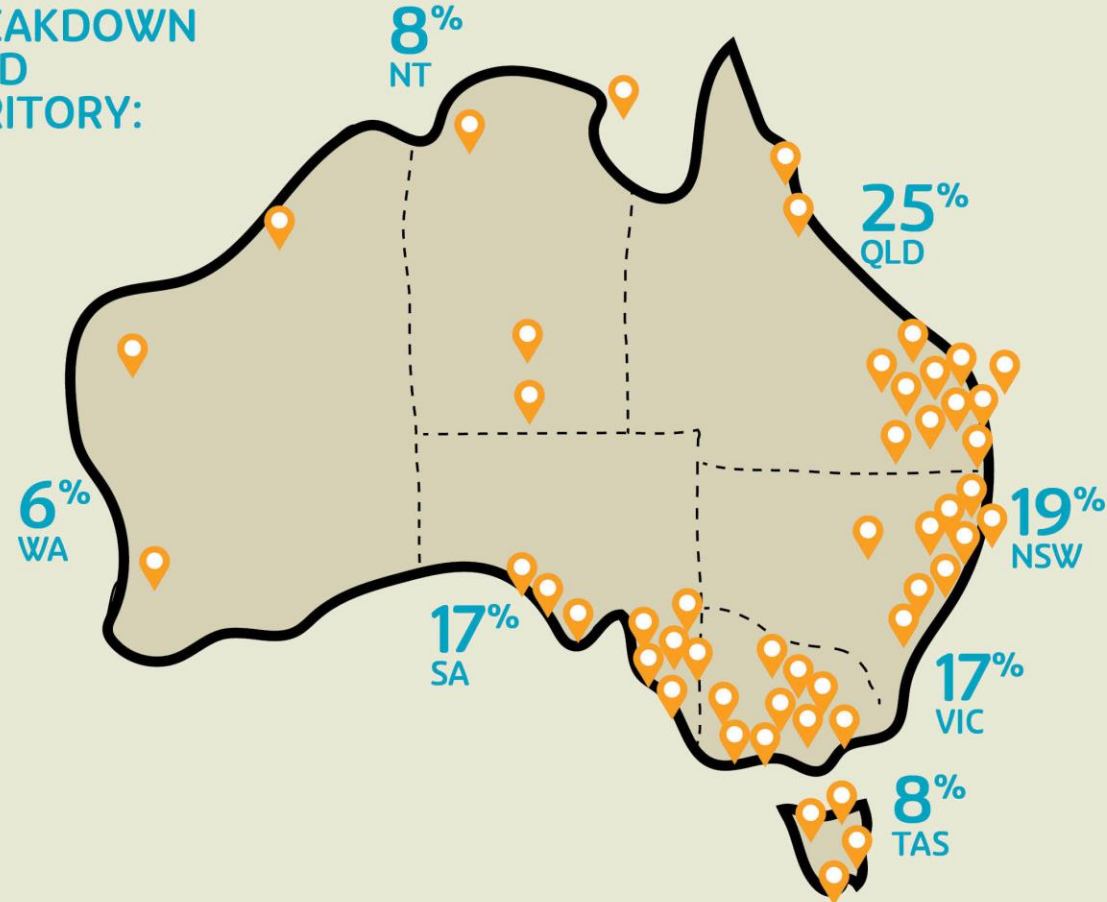
We forged long-term connections and collaborative projects with the communities we visited – identifying areas for potential partnership and outlining other opportunities for community organisations to be involved in PLACE's governance.



# 2025 Listening Tour



GEOGRAPHIC BREAKDOWN  
OF PLACES VISITED  
PER STATE / TERRITORY:



# Defining Place-Based Work

## SUBSIDIARITY

- \* Community governed structures
- \* Responsive to local context
- \* Valuing local knowledge
- \* Investing in local leadership

## ACCOUNTABILITY

- \* Shared decision-making
- \* Transparency in resource use
- \* Mutual accountability
- \* Continuous feedback loops

## PARTNERSHIP

- \* Shared vision and purpose
- \* Cross-sector collaboration
- \* Trust and reciprocity
- \* Equitable contribution & influence

# The Workforce Backbone



Skills



Learning

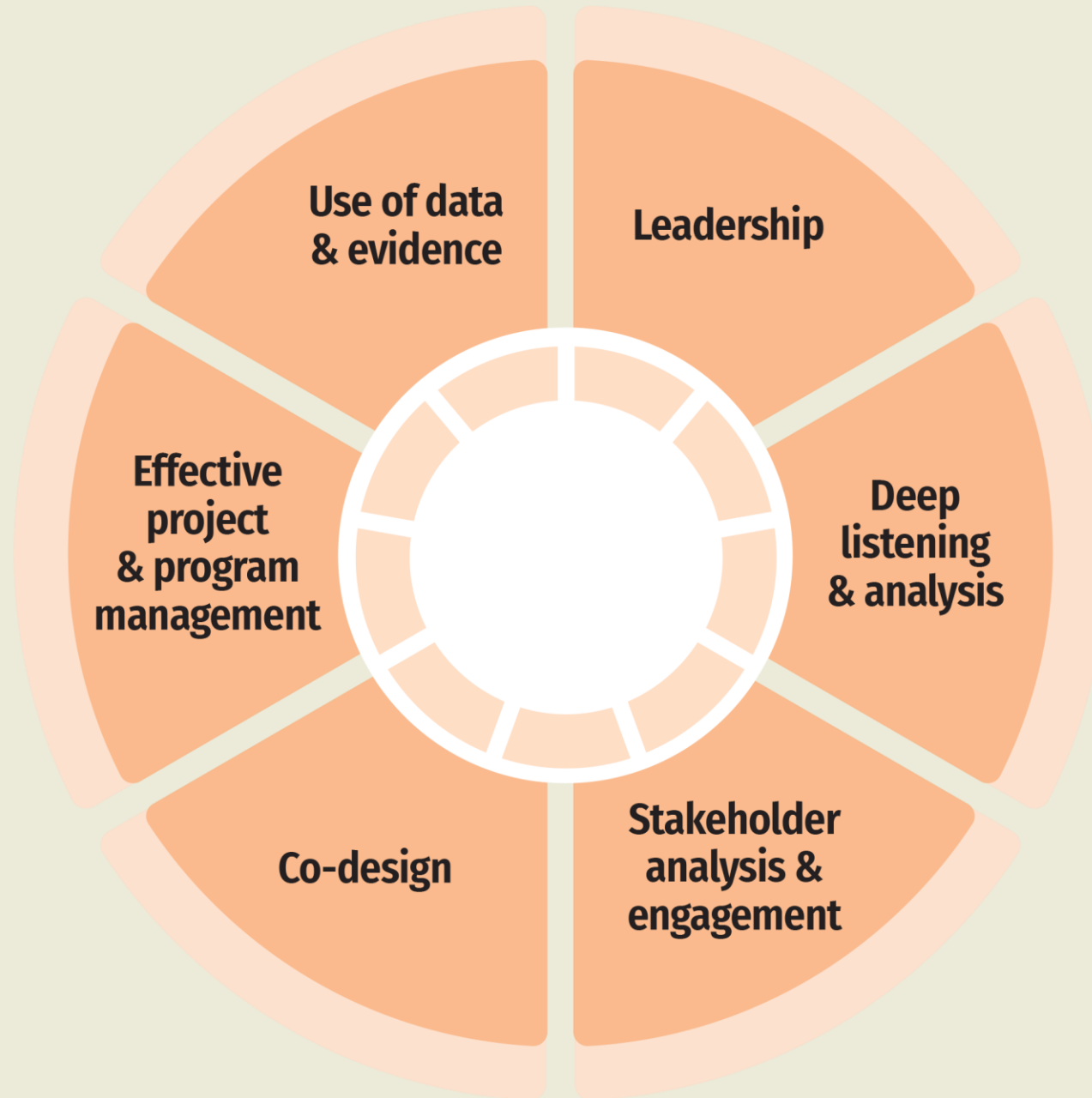


Pathways





# Skills



# Skills



**Images from 2025 Listening Tour: Brighton, TAS**

# Learning



Thriving Queensland  
Kids Partnership  
connect • catalyse • learn



every child thriving  
aracy

## Queensland Place-based Network

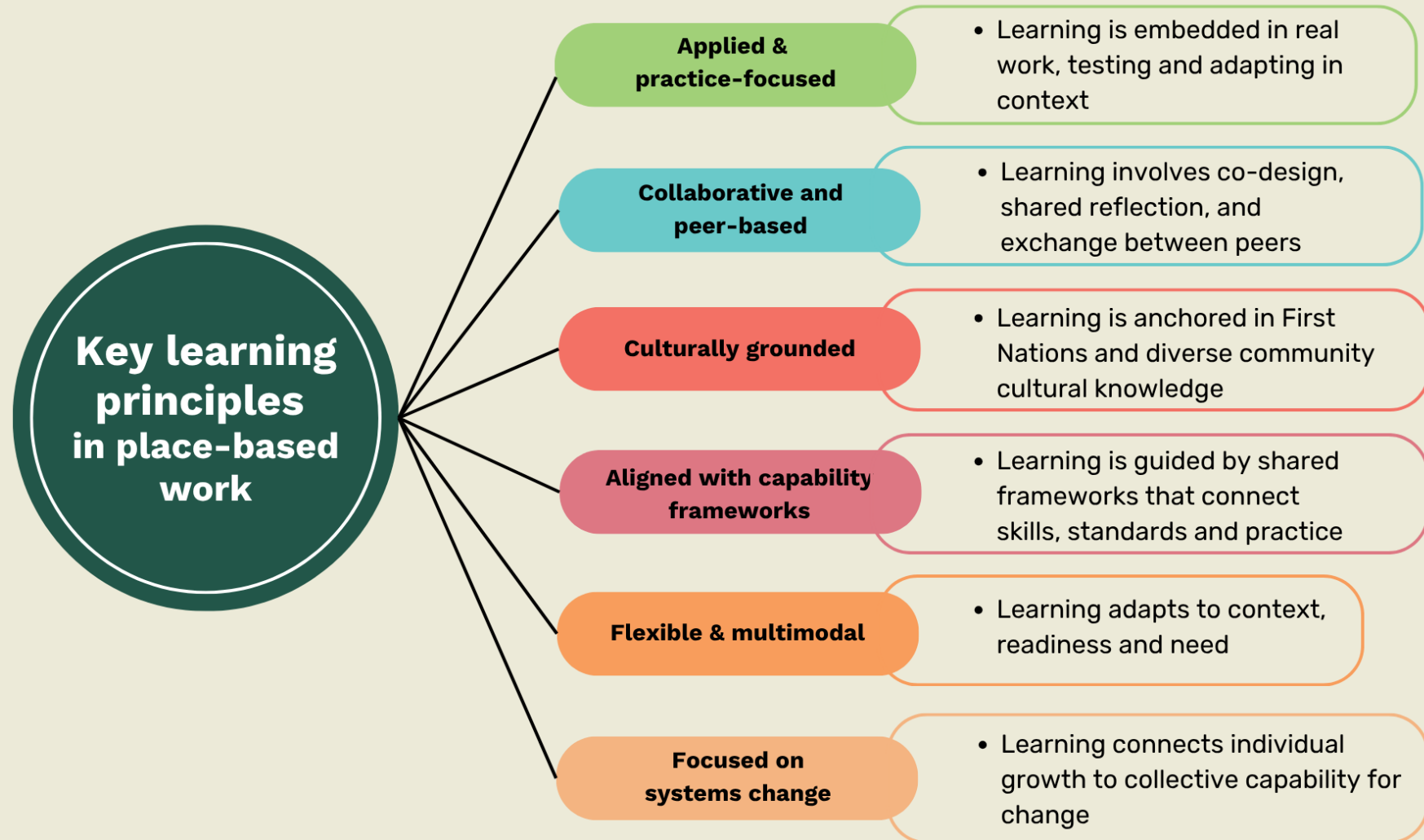
ensuring that kids and places in Queensland have what they  
need to thrive

A partnership to create a thriving place-based eco-system



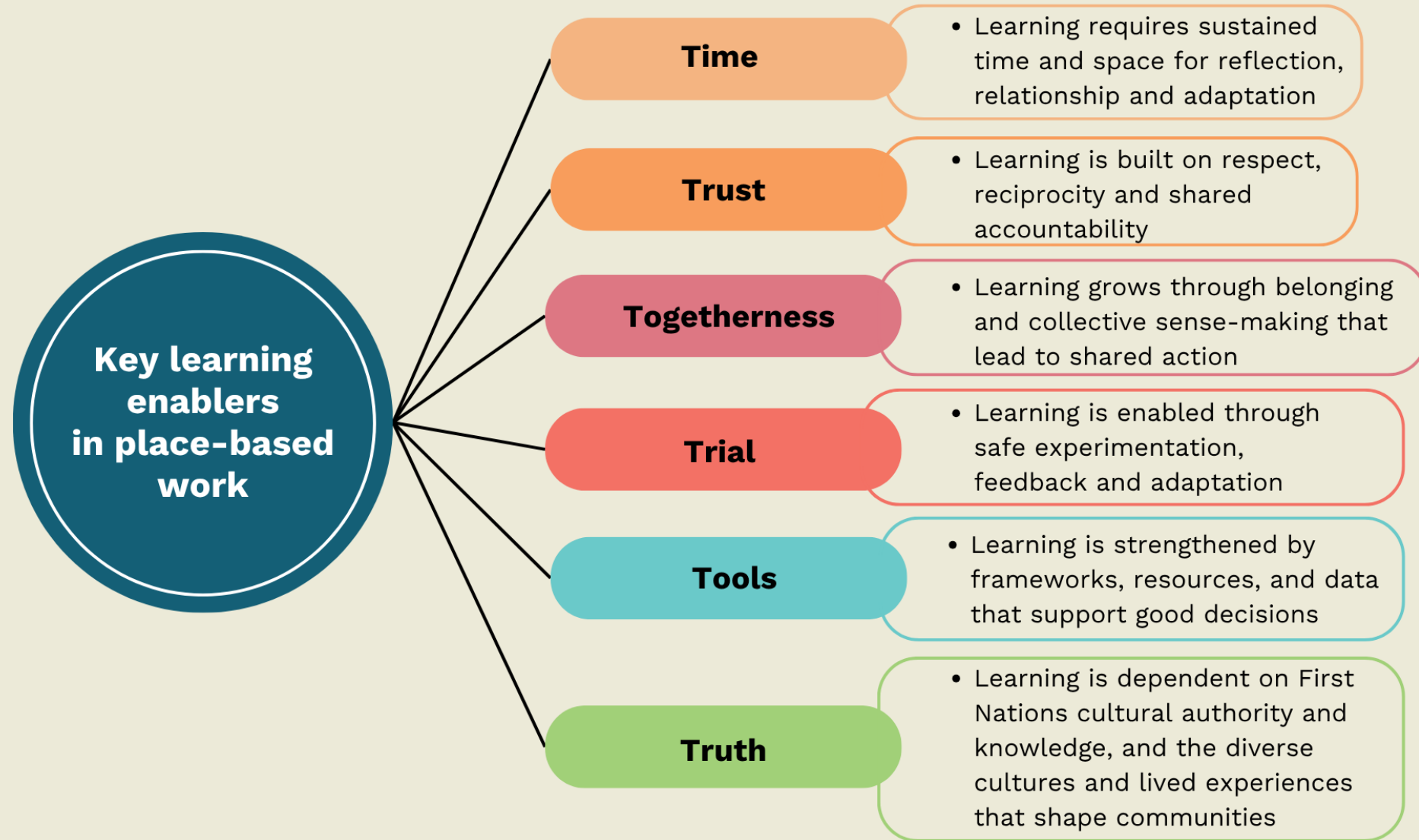
**Image credit: Thriving Queensland Kids Partnership**

# Learning Principles





# Learning Enablers



# Pathways



Images from 2025 Listening Tour: Pingelli, WA





# Pathways



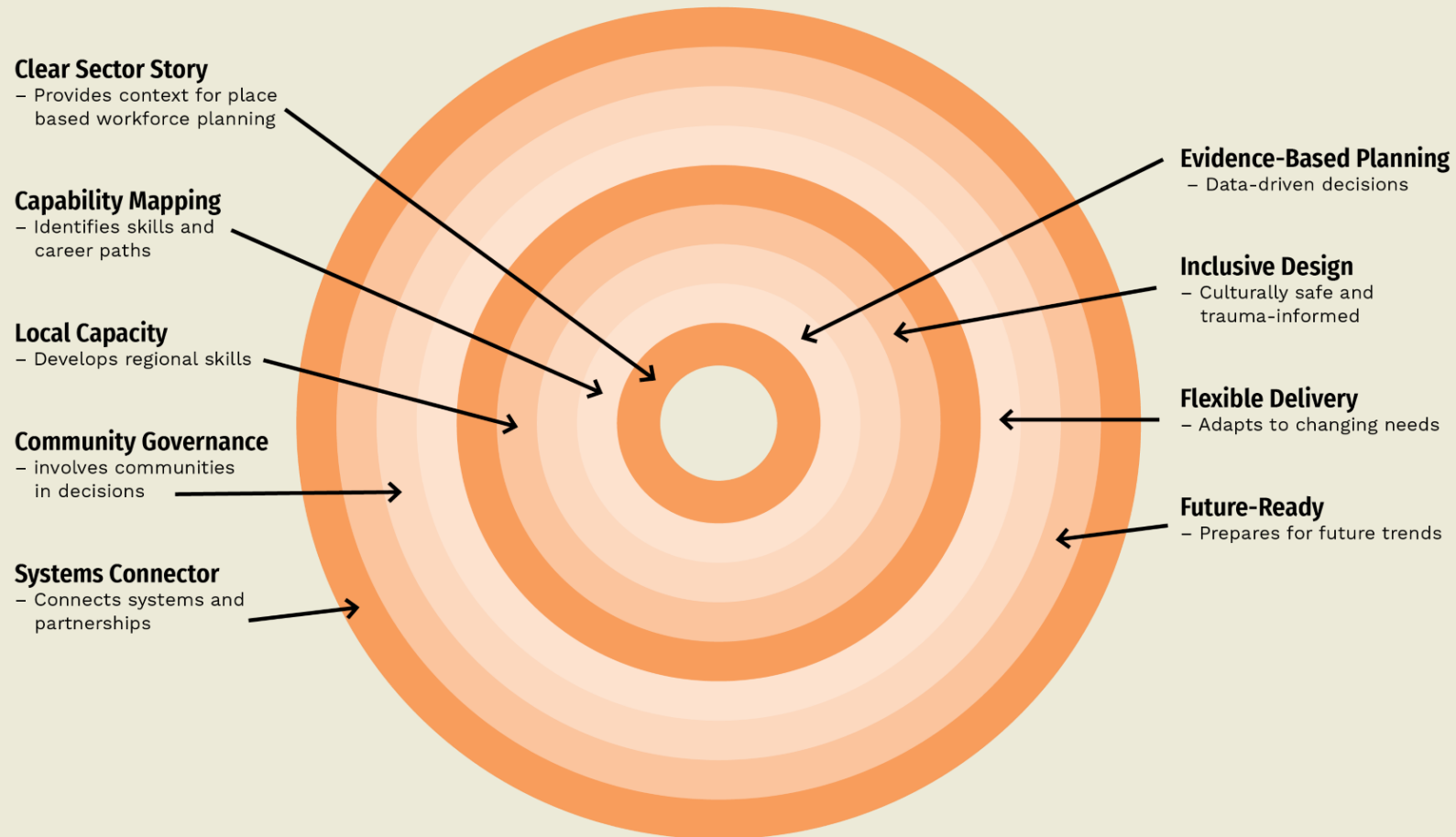
**Images from 2025 Listening Tour: Pingelly, WA**



# Workforce Strategy



## Place-based workforce strategy features



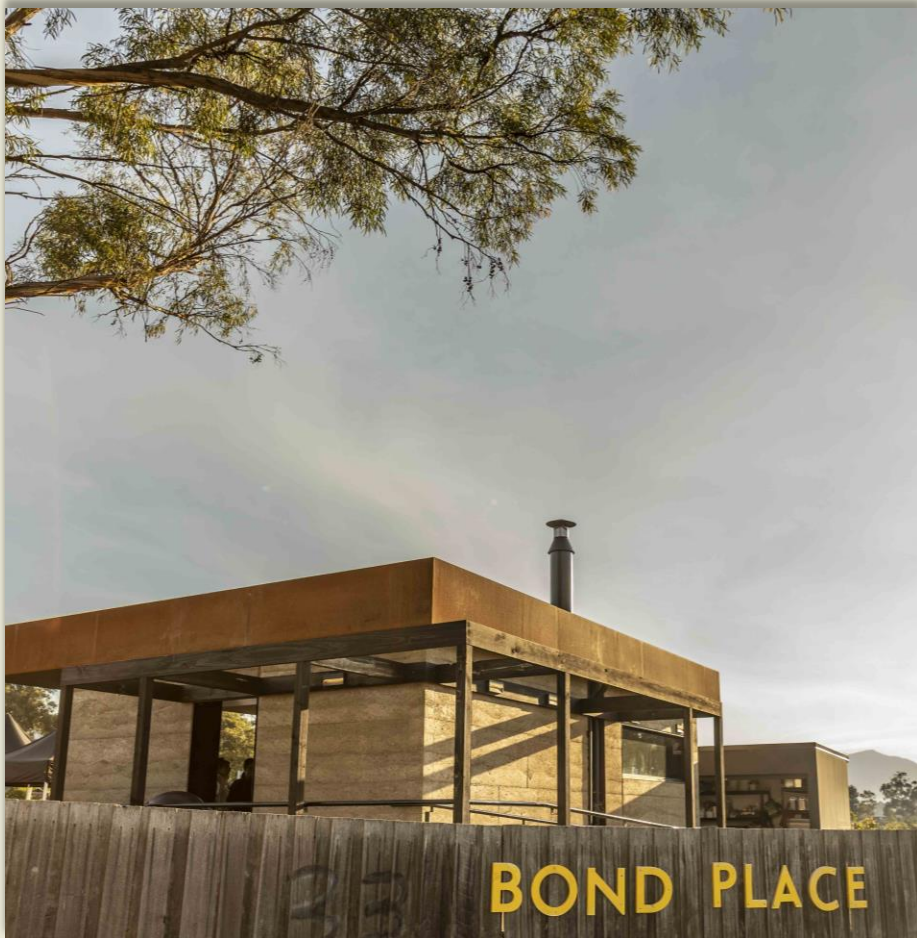


# A Shared Invitation

- \* Bring your learning
- \* Share your story
- \* Join our upcoming workshop after this session



# What's next?



- \* Honour what's already working
- \* Build the infrastructure of trust
- \* Stay connected



# PLACE

placeaustralia.org

For more information, contact PLACE at [info@placeaustralia.org](mailto:info@placeaustralia.org)